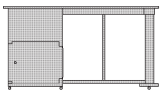
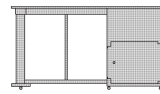
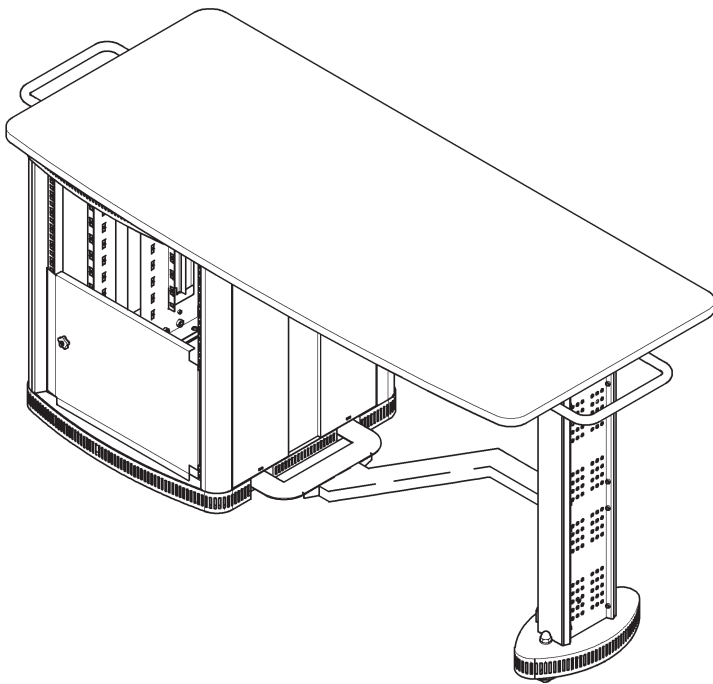


Educator

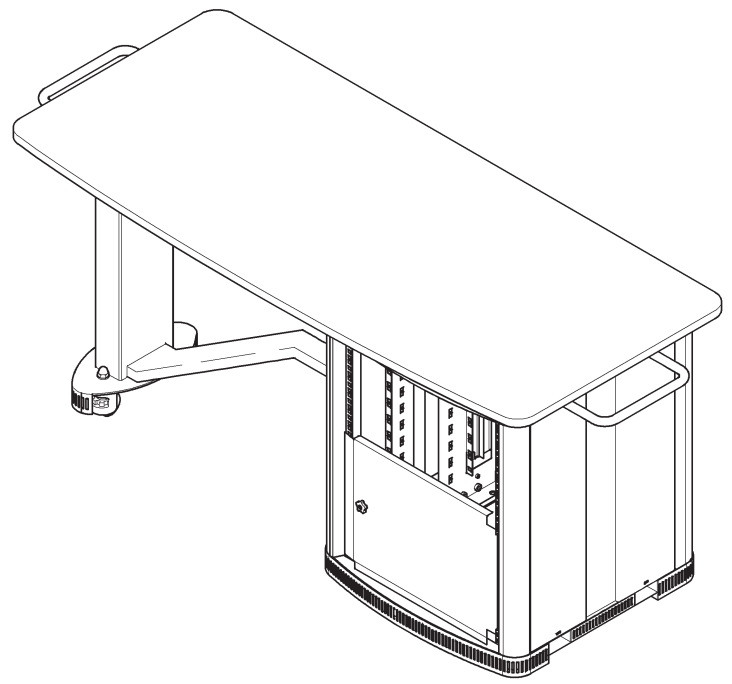
Assembly instructions for complete units shown below



↑
STAGE
LEFT

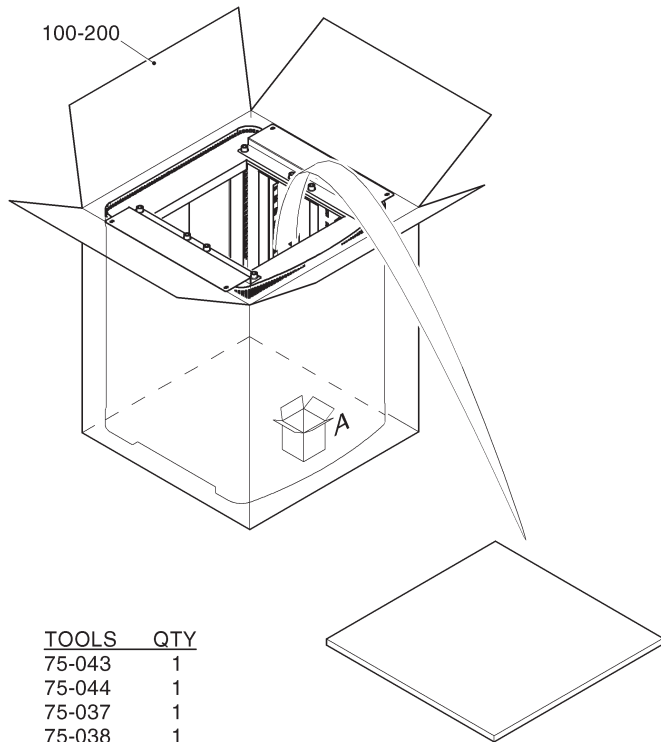


↑
STAGE
RIGHT

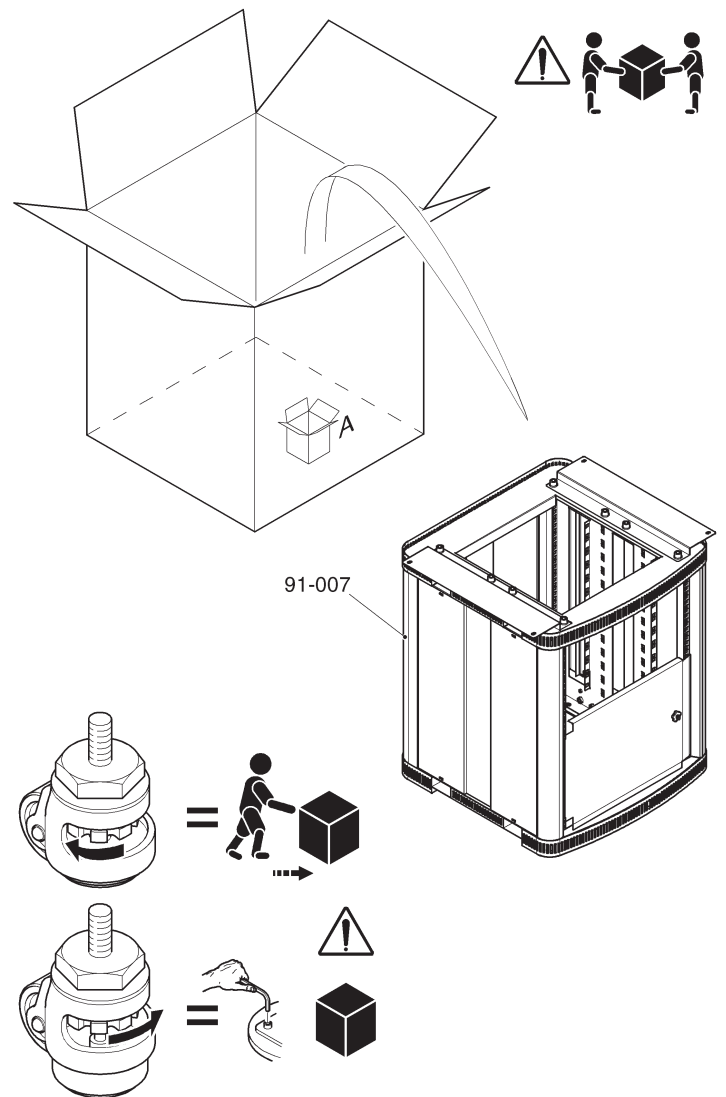
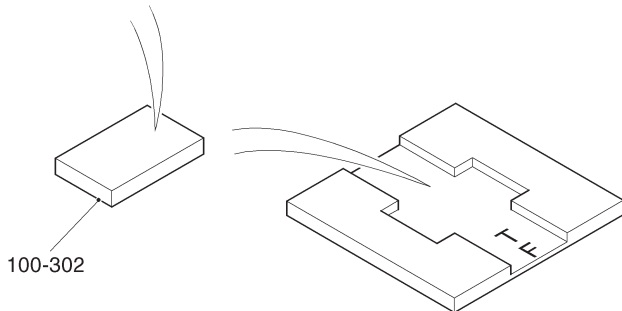


Educator

- 1 Unpack Box 'A'. Lift complete rack assembly on to a clean floor



TOOLS	QTY
75-043	1
75-044	1
75-037	1
75-038	1
75-045	1



100-200 Box 'A' exterior packing complete with interior fittings and accessory tray

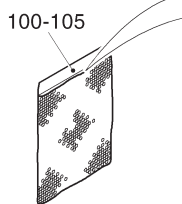
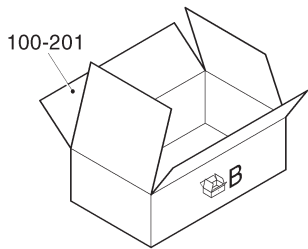
Accessory tray contents:

Tools: Qty: Description

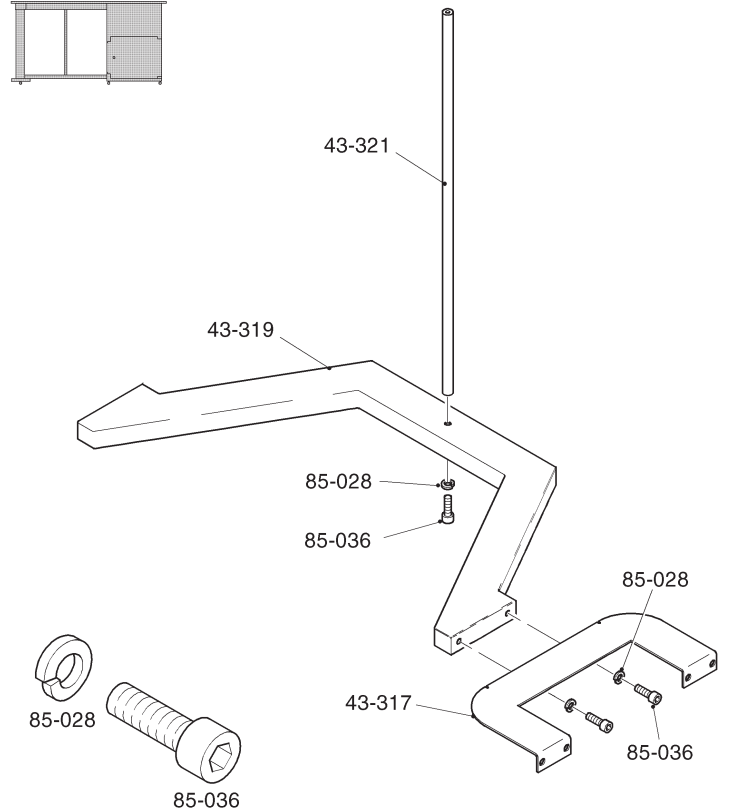
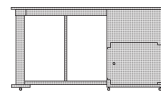
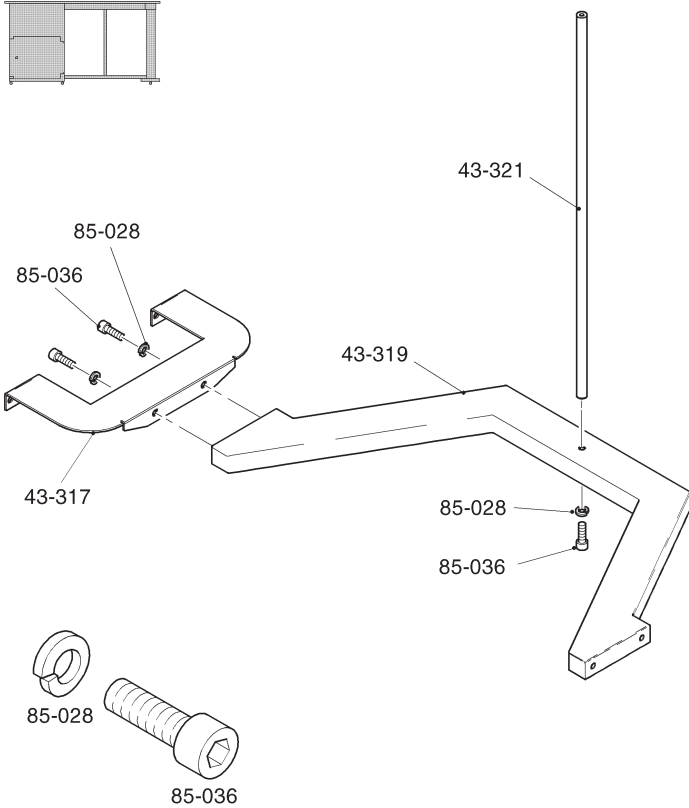
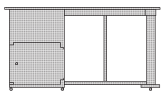
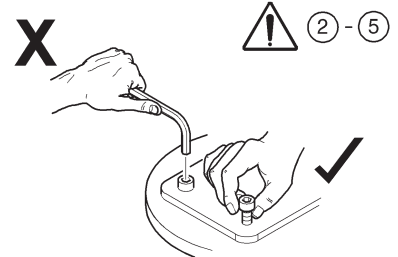
75-043	1	Hex ball key driver 5mm
75-044	1	Hex ball key driver 6mm
75-037	1	System Zero tamperproof driver size 2
75-038	1	System Zero tamperproof driver size 3
75-045	1	13mm open ended spanner

Educator

② Unpack Box 'B' and assemble lower outrigger assembly



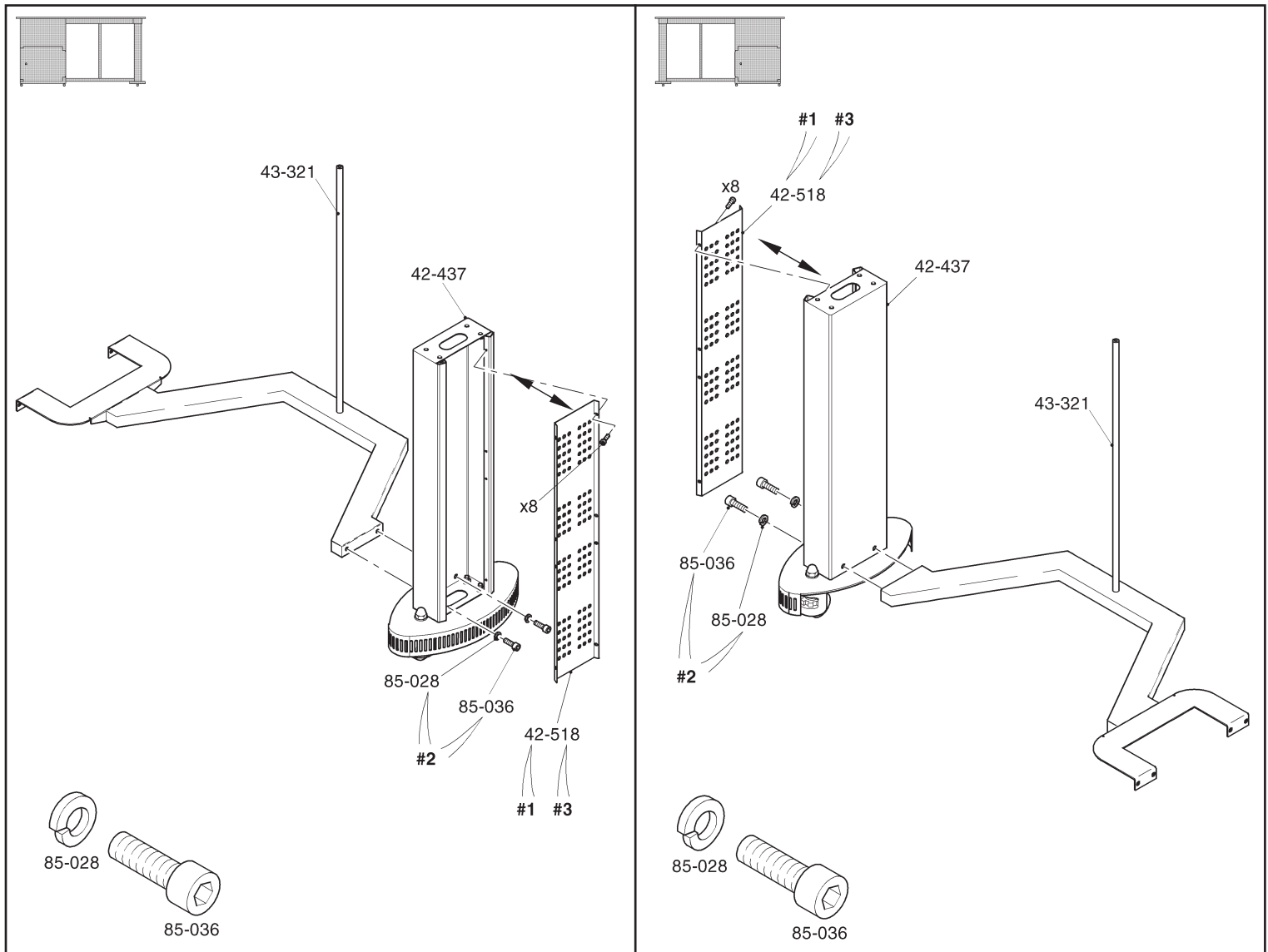
COMPONENTS	QTY
85-006	4
85-014	18
85-036	18
85-028	18



43-317	Educator lower outrigger bracket
43-319	Educator lower outrigger (1600mm)
43-321	Educator outrigger tie tube
85-028	M8 zinc plated steel spring washer
85-036	M8 x 20, zinc plated steel hex cap head
100-201	Box 'B' exterior packing complete with interior fittings
100-105	Standard 10 bubble pouch with self seal 280 x 375 x 50 lip

Educator

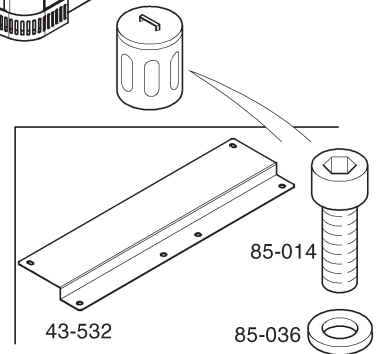
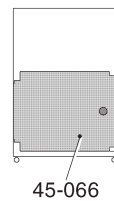
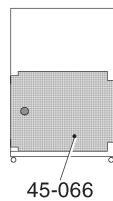
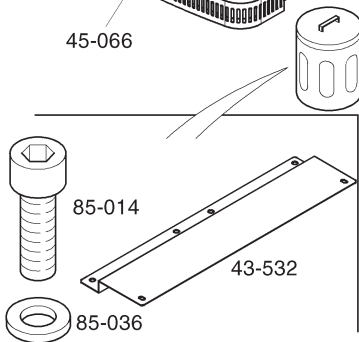
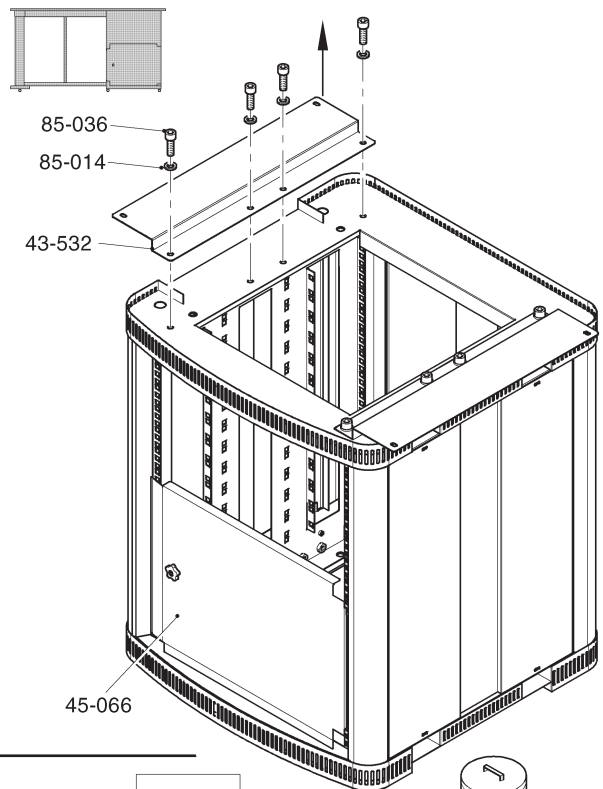
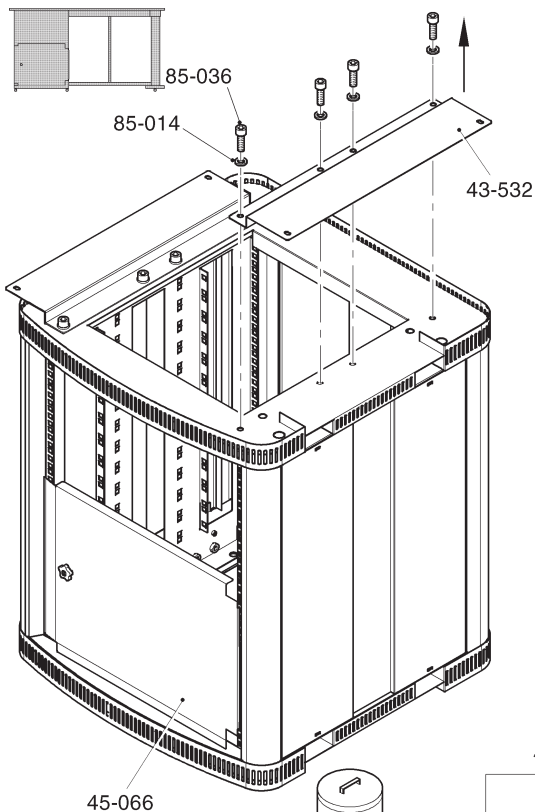
3 Attach outrigger column to lower outrigger



42-437	Outrigger column and castors
43-321	Outrigger tie tube
85-036	M8 x 20 zinc plated steel hexagon cap heads
42-518	Educator outrigger column pepperpot cover
85-028	M8 zinc plated steel spring washer

Educator

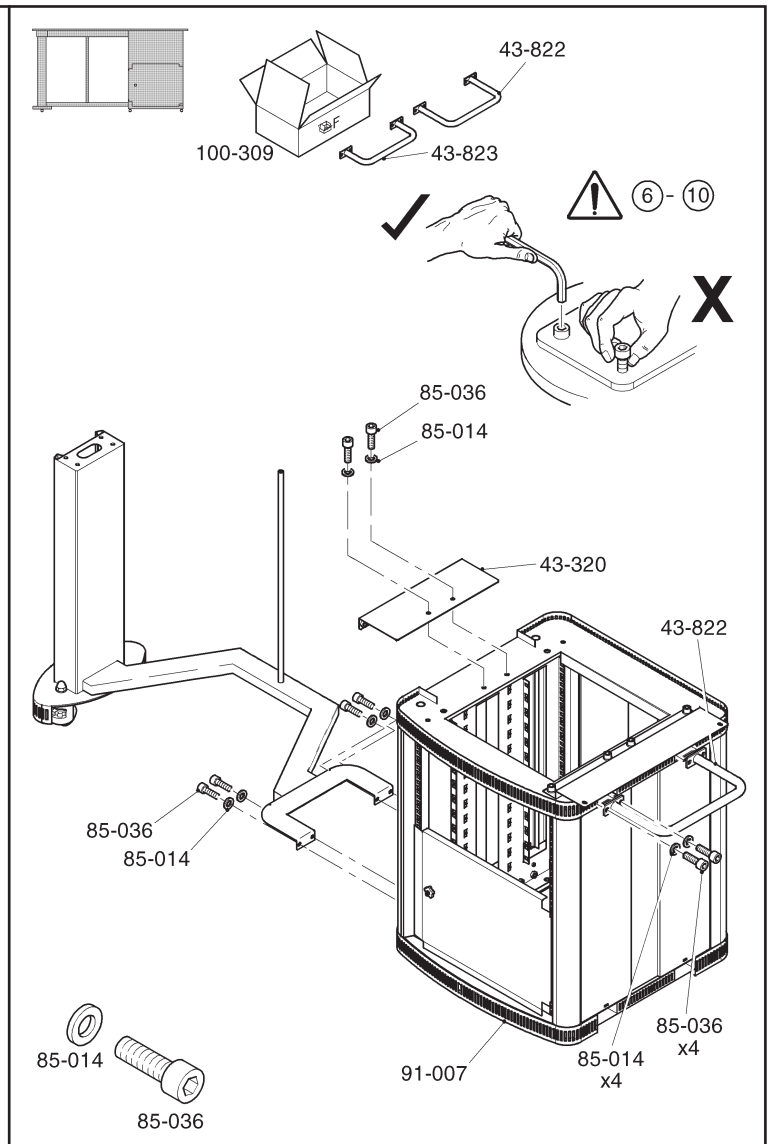
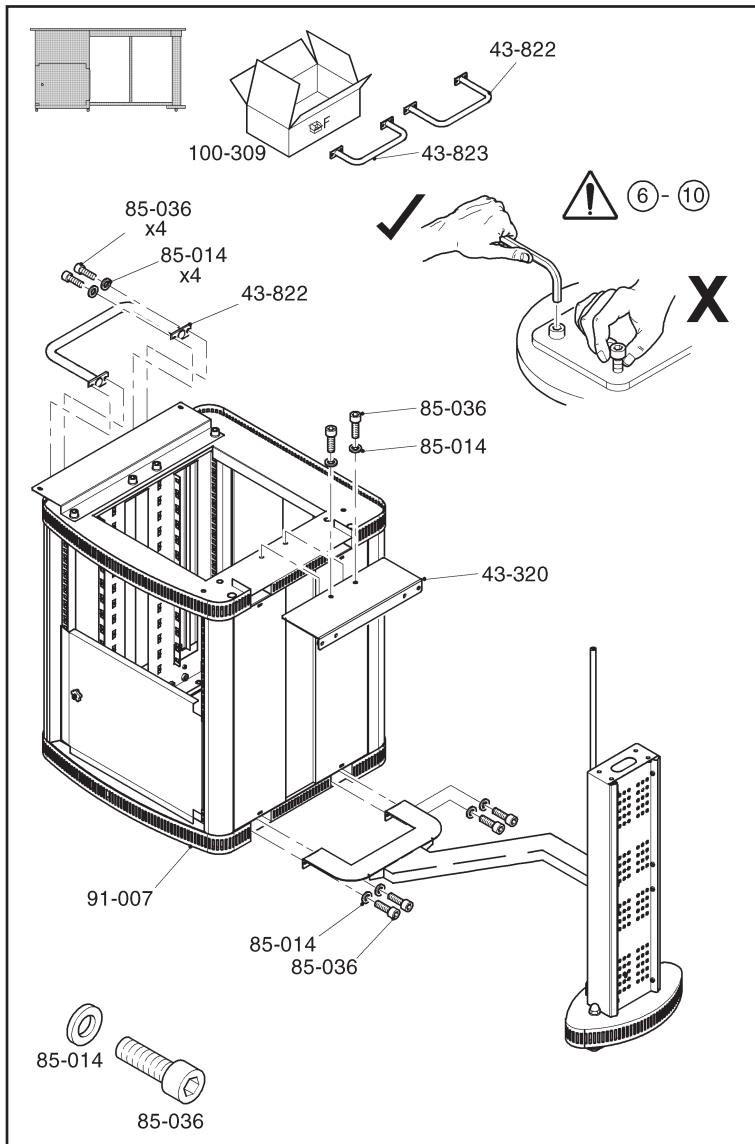
4 Remove one desktop bracket from top of rack



43-532	Desktop bracket
45-066	8U stainless steel door
85-036	M8 x 20 zinc plated steel hex cap heads (discard qty 2 removed)
85-014	M8 zinc plated plain steel washers (discard qty 2 removed)

Educator

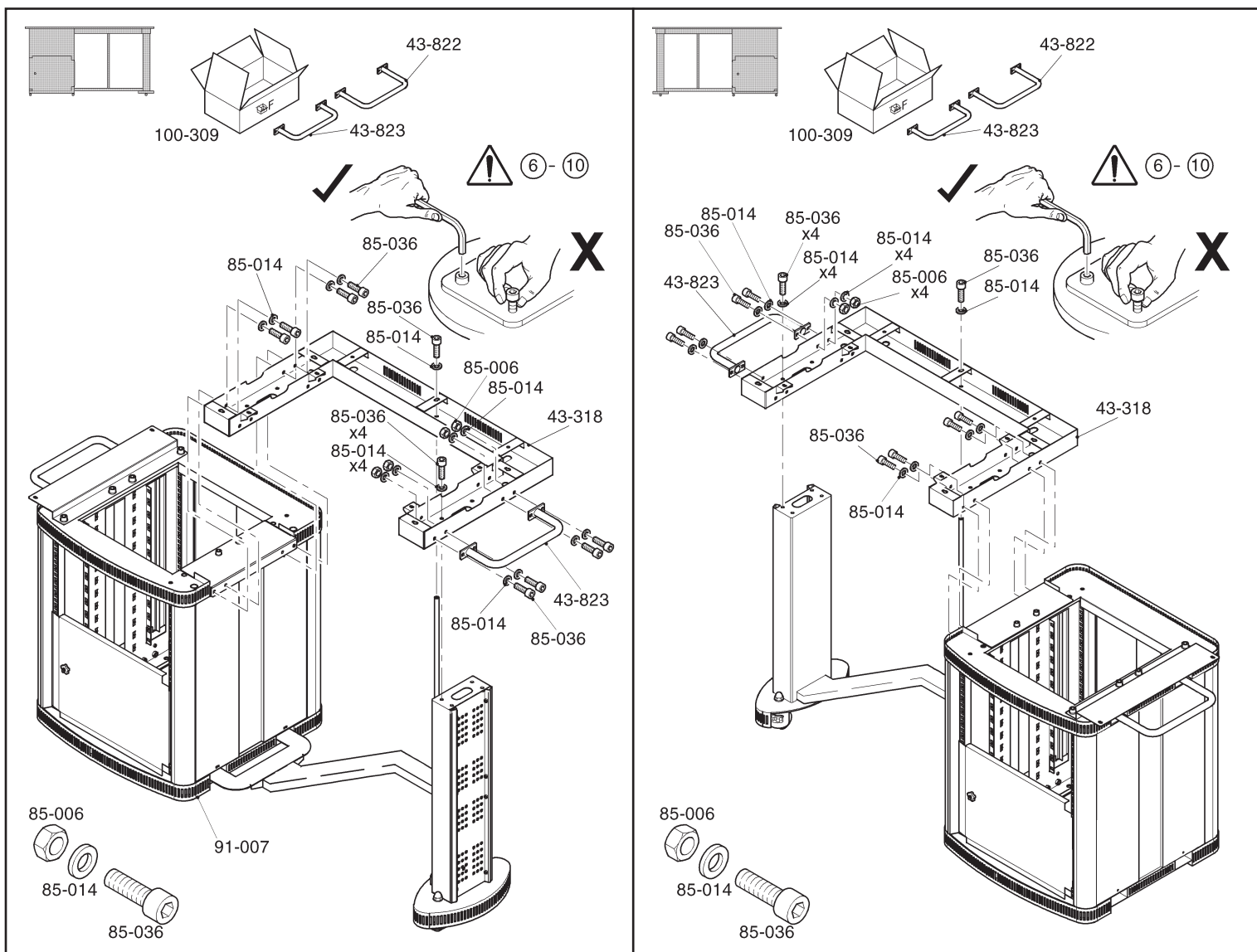
5 Attach rack assembly to outrigger, unpack Box 'F' and fit handles



85-014	M8 zinc plated plain steel washer
85-036	M8 x 20 zinc plated steel cap head
91-007	Educator rack unit assembly
43-320	Upper outrigger bracket
43-822	Rack handle
100-309	Box 'F' exterior packing complete with 43-822 and 43-823

Educator

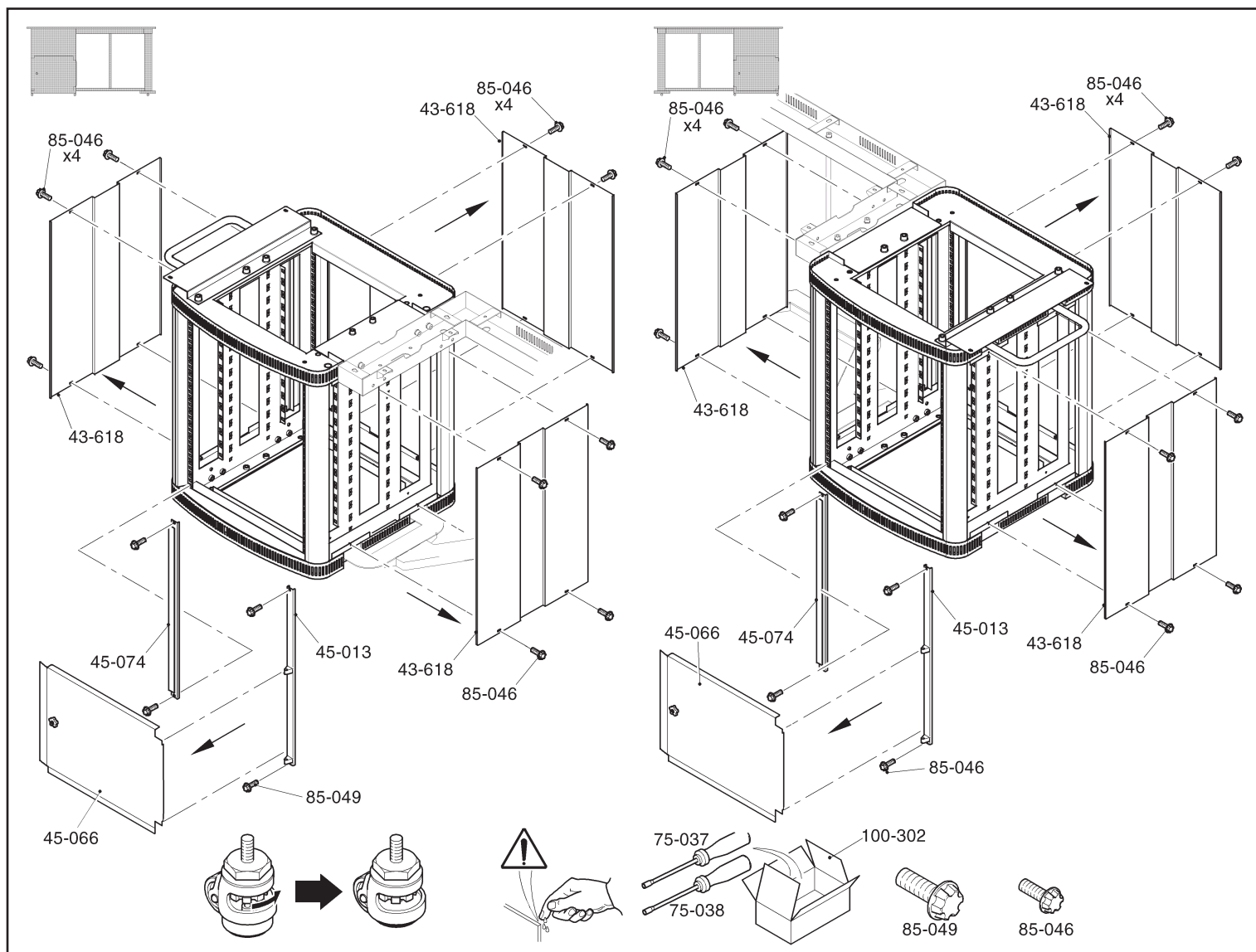
6 Attach rack assembly to outrigger and fit remaining handle 43-823 to outrigger



85-014	M8 zinc plated plain steel washer
85-006	M8 zinc plated steel hex nut
85-036	M8 x 20 zinc plated steel hex cap head
91-007	Educator rack unit assembly
43-318	Educator upper outrigger
43-823	Outrigger handle
100-309	Box 'F' exterior packing complete with 43-822 and 43-823

Educator

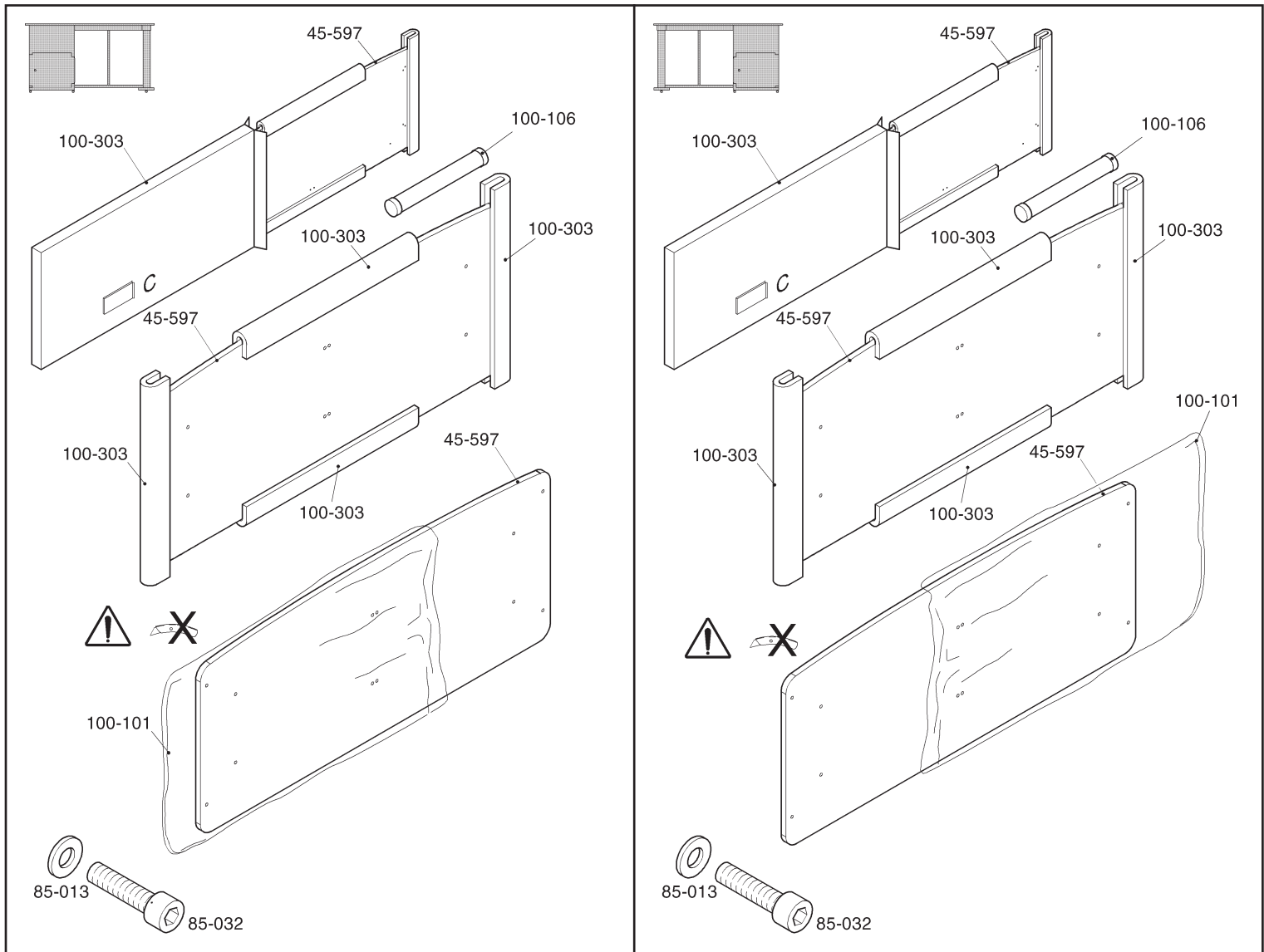
7 Remove all side covers and door ready for loading equipment and integration



43-618	Educator rack side and rear covers
45-066	8U stainless steel door
45-074	14U rack trim striker with keyed door knob
85-046	M4 x 12 zinc plated steel System Zero screws
100-302	Accessory box containing System Zero tamperproof drivers size 2 and 3
91-007	Educator rack unit assembly

Educator

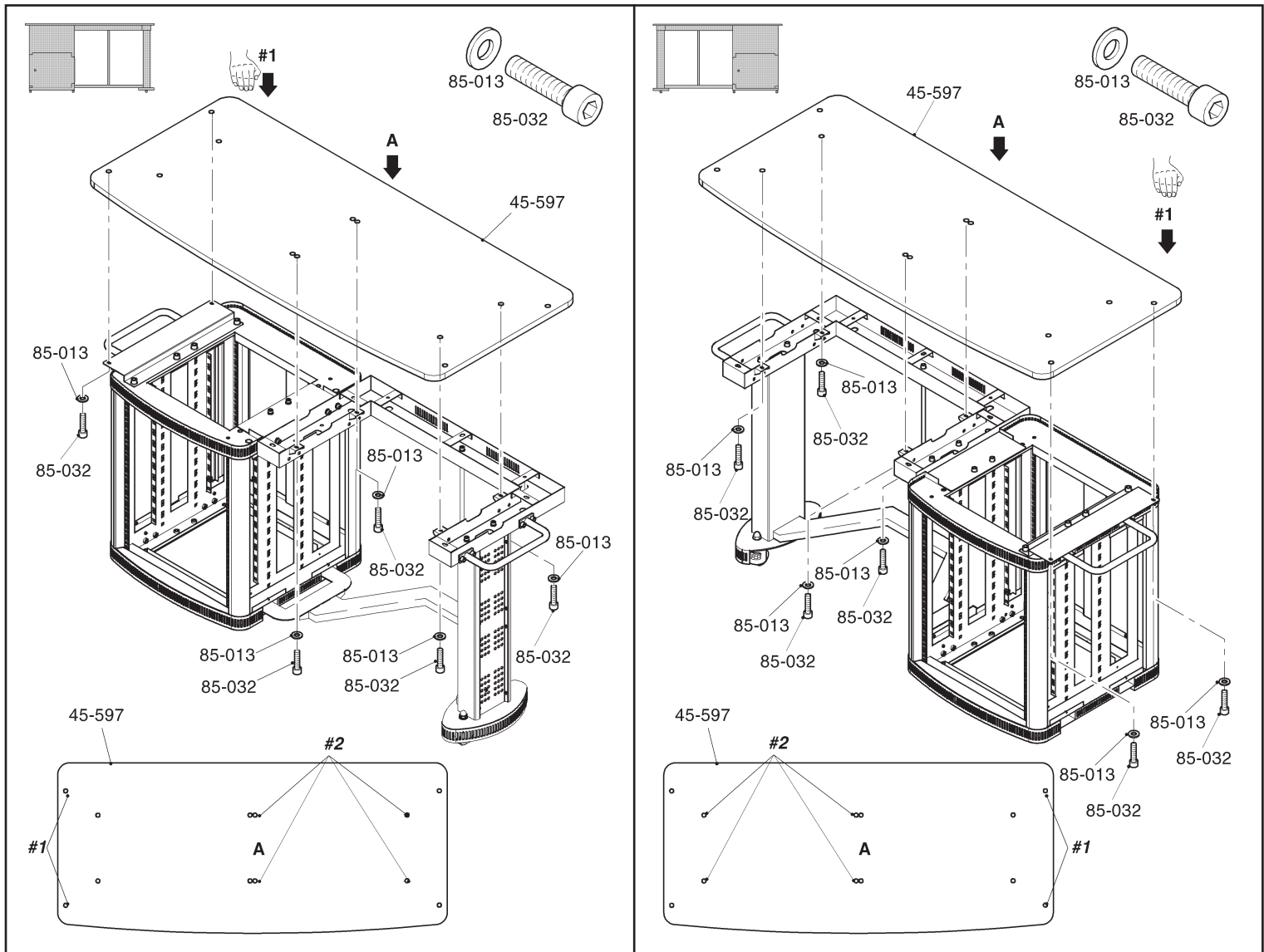
8 Unpack Box 'C' and prepare desktop for fitting



100-303	Box 'C' exterior packing box complete with interior edge protectors
45-597	Educator desktop ambidextrous for stage right or stage left
100-101	Educator desktop polythene bag
85-032	M6 x 16 zinc plated steel hex cap head
85-013	M6 zinc plated steel plain washer

Educator

9 Lift ambidextrous desktop into position and secure to desktop and outrigger



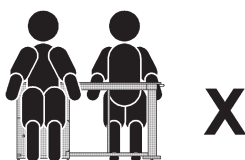
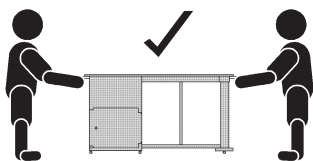
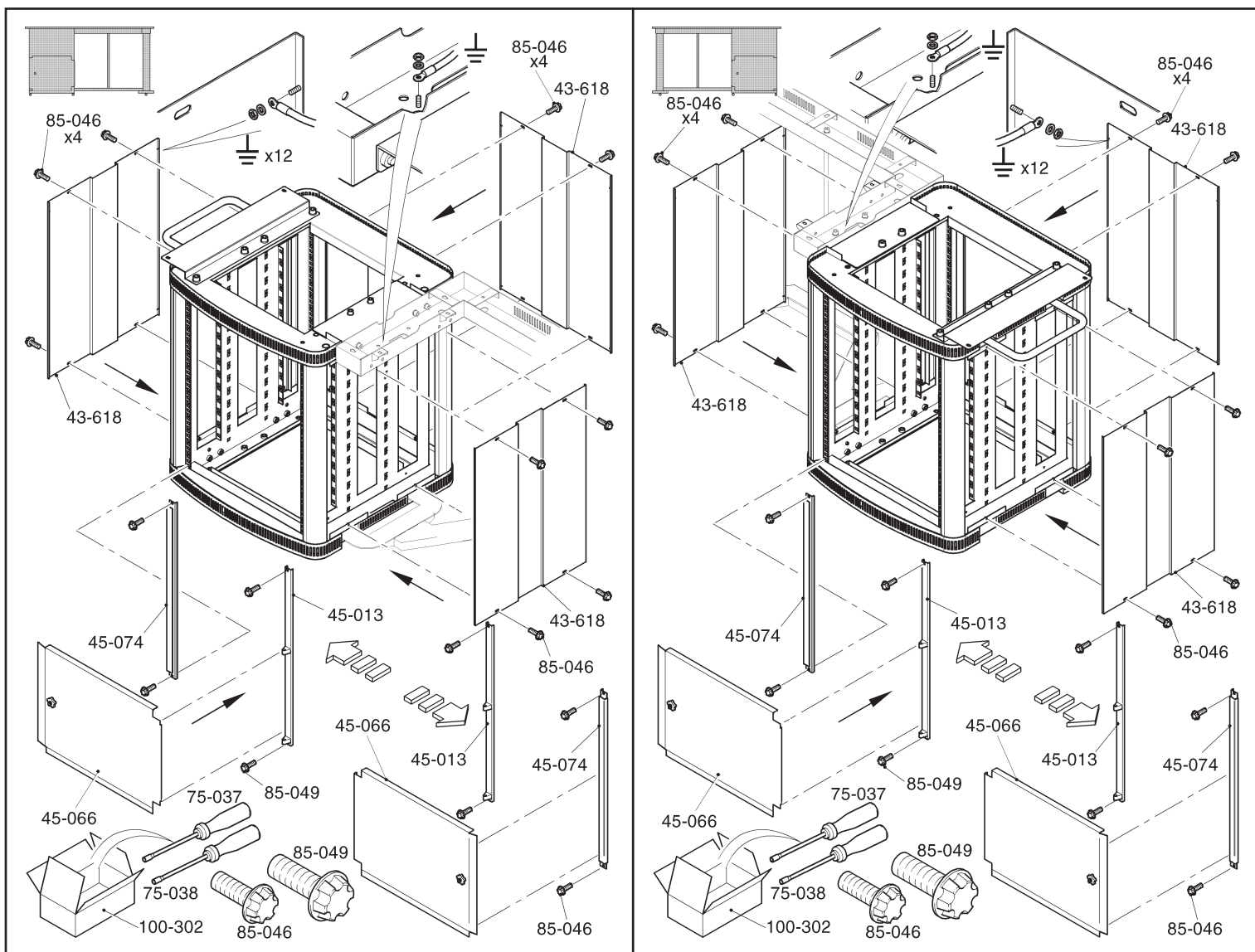
85-032 M6 x 16 zinc plated steel hex cap head

85-013 M6 zinc plated steel plain washer

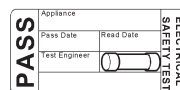
45-597 Educator desktop ambidextrous for stage right or stage left

Educator

10 Refit covers and door removed in Step 7 (Outrigger not shown)



UK



Manufactured in the UK by: Performance Enclosures Limited,
6 Rockfort, Hithercroft Road, Wallingford, Oxon, OX10 9DA, United Kingdom



Advisory Notes: Equipment loading and integration

